



# Advancing Research in the Elder Mistreatment Ecosystem



**Melissa S. Gerald, Ph.D.**

Division of Behavioral and Social  
Research

National Institute on Aging

February 22, 2024

# NIA's 50<sup>th</sup> Anniversary

- 2024 marks the **50<sup>th</sup> anniversary** of the National Institute on Aging
- Since 1974, NIA has led **broad scientific efforts** to understand the **nature of aging** and to extend the **healthy, active years** of life
- Learn about **major milestones** in NIA's history: [www.nia.nih.gov/50years](http://www.nia.nih.gov/50years)

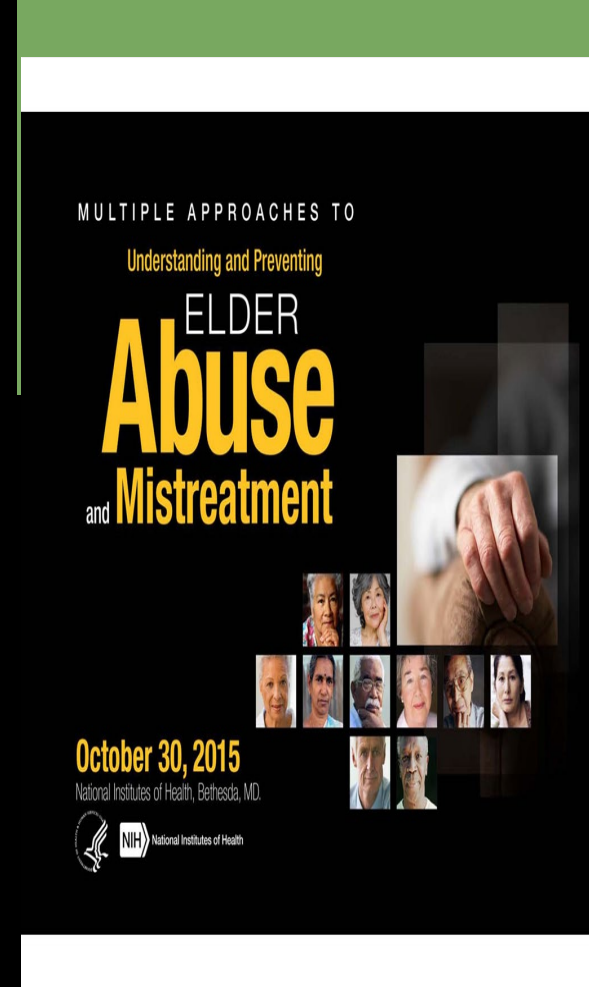
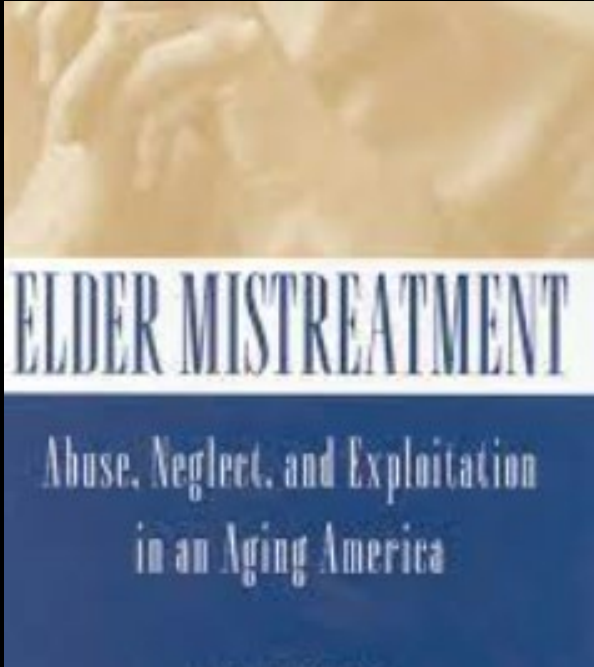


To celebrate, NIA is conducting a series of activities throughout 2024 to **highlight progress** over the past 50 years and to **inspire future generations** of aging researchers.

# NIA Mission



- Support and conduct genetic, biological, clinical, behavioral, social, and economic research related to **the aging process**, diseases and conditions associated with **aging**, and other special problems and needs of older Americans.
- Foster the development of research and clinician scientists in aging.
- Provide research resources.
- Communicate information about aging and advances in research on aging to the scientific community, health care providers, and the public.



# NIA's Contribution to Elder Mistreatment Research

**The National Academies  
Committee on National Statistics  
Meeting on Research Issues in  
Elder Mistreatment and Abuse and Financial Fraud  
June 22, 2010  
MEETING REPORT**

**SCIENTIFIC WORKSHOP ON  
VIOLENCE & related health  
outcomes in  
SEXUAL & GENDER MINORITY COMMUNITIES**

# Cross-cutting themes



# Topic Areas

- Screening and Interventions
- Gender-based violence
- Firearms violence
- Prevalence + Demographics
- Artificial Intelligence and Machine Learning



Bringing targets into  
focus

# Rigor in Reporting PICOTS

## Common Data Elements

## Uniform Data System

PICOTS	Micro-level	Meso-level	Macro-level
Populations	Girls and women who obtained abortions or post-abortion care and members of their households	Communities and health systems in which girls and women obtain abortions or post-abortion care	Societies and nation states in which girls and women obtain abortions or post-abortion care
Interventions	Induced abortion (safe/unsafe), post-abortion care and/or abortion policies		
Control	None		
Outcomes	Quantitative or qualitative data on: <ul style="list-style-type: none"> <li>▶ Economic costs of abortion care or abortion policies.</li> <li>▶ Economic impacts of abortion care or abortion policies.</li> <li>▶ Economic benefits of abortion care or abortion policies.</li> <li>▶ Economic value of abortion care or abortion policies.</li> </ul>		
Timeframe	1 September 1994–15 January 2019		
Setting	Any		
	<ul style="list-style-type: none"> <li>▶ ScienceDirect.</li> <li>▶ Web of Science.</li> </ul>	abortions may have economic consequences for individuals, households, and even the macroeconomy. The	



# The Need for Needs Assessments



<b>Experts</b>	<b>Expertise</b>
<b>Health service</b>	Health care quality: outcomes, safety, satisfaction, access, cost
<b>Social psychologists</b>	Influence on individual behavior of social interactions and societal norms
<b>Economists</b>	Economic impact; costs associated with medical care, legal services, and social support; financial exploitation, patterns and prevention strategies
<b>Public health researchers / epidemiologists</b>	Disease surveillance, design and evaluate health interventions, analyze health data, work on policy development, address health inequities, engage with communities, and promote health initiatives
<b>Survey methodologists / psychometricians</b>	Survey research methods, survey instrument design, sampling techniques, data collection procedures, and data analysis; development and refinement of surveys and tests to measure psychological constructs
<b>Information and Technology</b>	Digital tools and platforms for detection and surveillance, development of apps, online platforms, and monitoring systems

# Screening & Interventions in Primary Care: Unanswered Questions

RCTs of screening tools and interventions in primary care settings

Does screening in healthcare settings for current, past, or increased risk for abuse and neglect reduce exposure to abuse and neglect, physical or mental morbidity, or mortality?

What are benefits and harms of screening for abuse?

How well do interventions reduce exposure to abuse and neglect, physical or mental morbidity, or mortality among screen-detected older adults with current, past, or increased risk for abuse and neglect?

What are the benefits and harms of interventions for abuse and neglect

What is the accuracy of screening questionnaires or tools for identifying asymptomatic populations with abuse

# Gender-based Violence and Gender

**U.S. NATIONAL PLAN TO END  
GENDER-BASED VIOLENCE:  
STRATEGIES FOR ACTION**



**The National Institutes of Health (NIH)  
Office of Research on Women's Health (ORWH)**

**Notice of Special Interest:**  
Health Influences of Gender as  
a Social and Structural Variable



**NIH** National Institutes of Health  
Office of Research on Women's Health

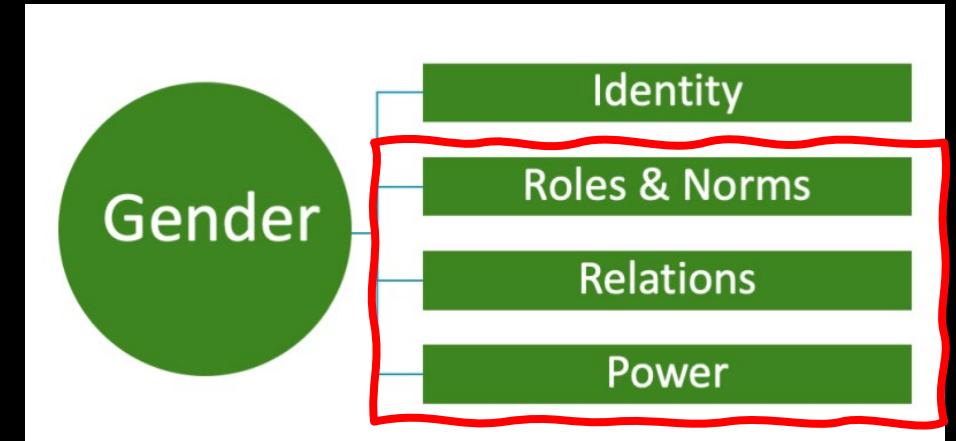


[www.nih.gov/women](http://www.nih.gov/women)

# Notice of Special Interest (NOSI): Health Influences of Gender as a Social and Structural Variable

NOT-OD-24-038

- Invites research and training grant applications focused on the health impacts of gender-related social and structural variables.
- Applications must demonstrate a clear and central focus on social and/or structural domains of gender in **one** of the following areas:
  1. Elucidating modifiable factors in gender-related health disparities;
  2. Developing, testing, or implementing social or structural interventions to mitigate gender-related health disparities; **OR**
  3. Investigating the interactions between multiple social and structural domains of gender (e.g., gender roles and gender inequity; power and gender relations).



**NOSI Expiration date:**

October 1, 2025, by 11:59 p.m., EST  
*Check individual NOFOs for applicable receipt dates.*

# OBSSR's Firearm Injury and Mortality Prevention Initiatives

## FY2020

- PAR-20-143  
R61  
0/4
- NOT-OD-20-089  
Competitive  
revisions  
1/2

## FY2021

- PAR-21-191  
R21/R61-CT  
1/2
- PAR-21-192  
R01-CT  
2/8

## FY2022

- PAR-22-115  
UG3/UH3  
Community Level  
Interventions  
0/3
- PAR-22-120  
U24 CC  
0/1

## FY2023

- PAR-23-066  
UG3/UH3  
Reissue  
0/5
- PAR-23-107
- PAR-23-108-CT  
K18 Career  
0/3

# FY2024 PAR-24-070: Career Enhancement Award to Advance Research on Firearm Injury and Mortality Prevention (K18 Independent Clinical Trial Not Allowed)

- *Clinical Trial Required + No Clinical Trials Allowed*
- *Short-term training projects: 50% 6 mos—up to 24 mos*
- *New collaborations*
- *March 15, 2024*

## **Novel skill combinations**

- Expertise in risk factor and/or prevention/intervention
- Methodological expertise in relevant approaches
- Expertise in health disparities or health equity research

## **Expectations**

- Open data, open code, pre-registration of research projects, and open access to research articles.
- Awards will support ideologically + politically unbiased research.

# Examples of Projects & Training Activities

## Project examples

- Identify mutable risk or protective factors that impact firearm vulnerability
- Examine variables that affect implementation, scalability and/or sustainability of preventive interventions, which may serve as future targets
- Develop + test new research tools, measures, or methods
- Test feasibility of integrating existing data sets for analysis of factors affecting access, quality or outcomes of firearm prevention interventions.

## Training examples

- Conduct secondary analysis
- Supplement data collection
- Conduct pilot study

## Budget

- 6-9 months per yr salary +fringe
- \$50,000 research/training development



# What might we expect in FY2024?

---



[Administration](#) P

MARCH 09, 2023

## HEET: The President's Budget for Fiscal Year 2024



[OMB](#)

[BRIEFING ROOM](#)

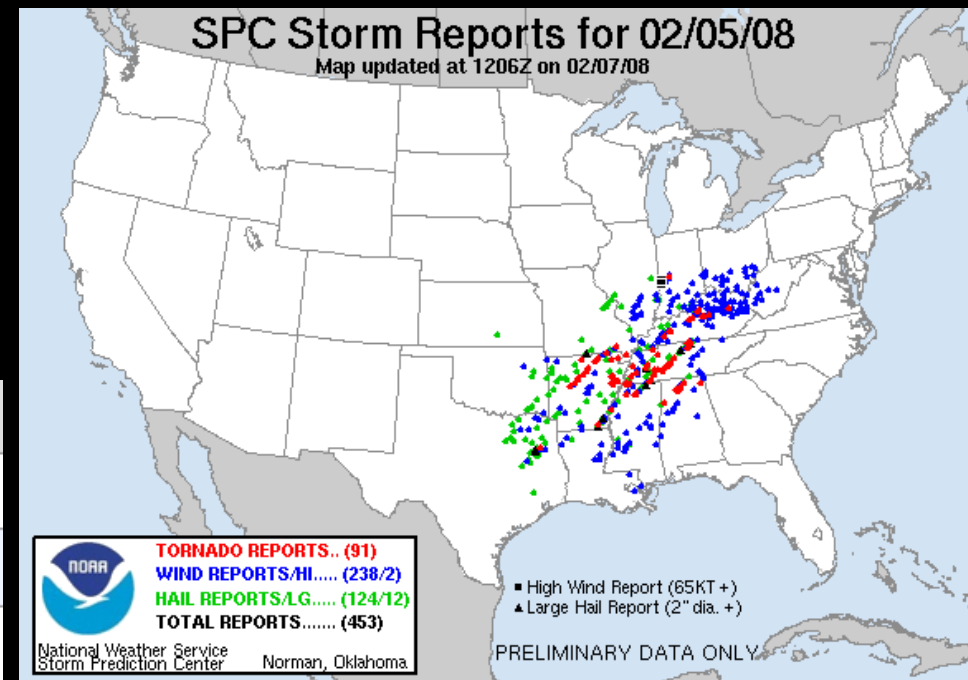
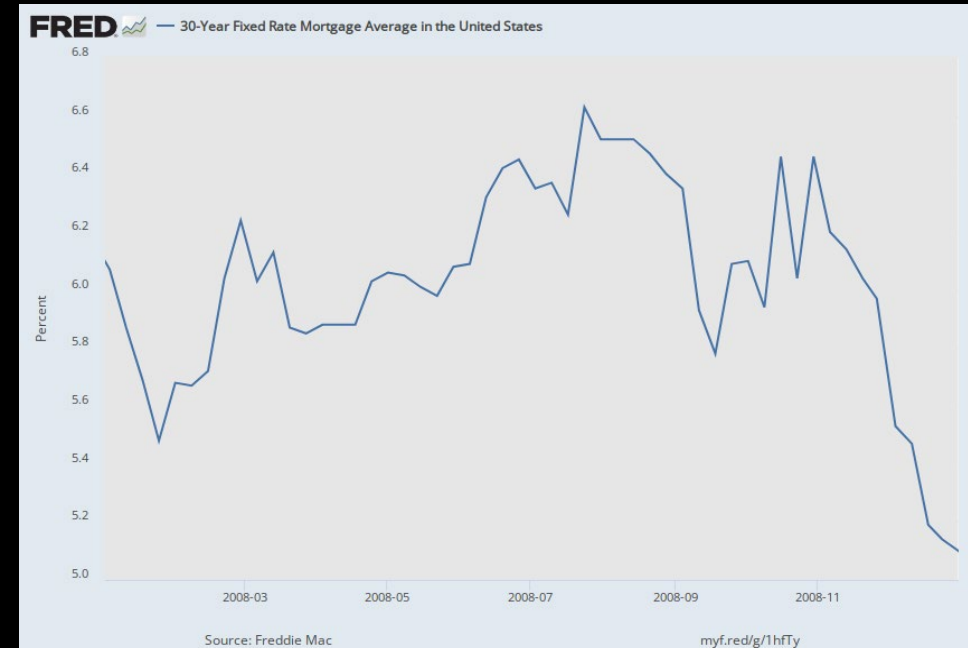
[PRESS RELEASES](#)

Congressional  
Justification of NIH's FY  
2024 request for firearm  
research = \$12.5 million

# Prevalence & Demographics



Year	Jan	Feb	Mar	Apr	May	Jun	Jul	Aug	Sep	Oct	Nov	Dec	Annual
2006	4.7	4.8	4.7	4.7	4.6	4.6	4.7	4.7	4.5	4.4	4.5	4.4	
2007	4.6	4.5	4.4	4.5	4.4	4.6	4.7	4.6	4.7	4.7	4.7	5.0	
2008	5.0	4.9	5.1	5.0	5.4	5.6	5.8	6.1	6.1	6.5	6.8	7.3	



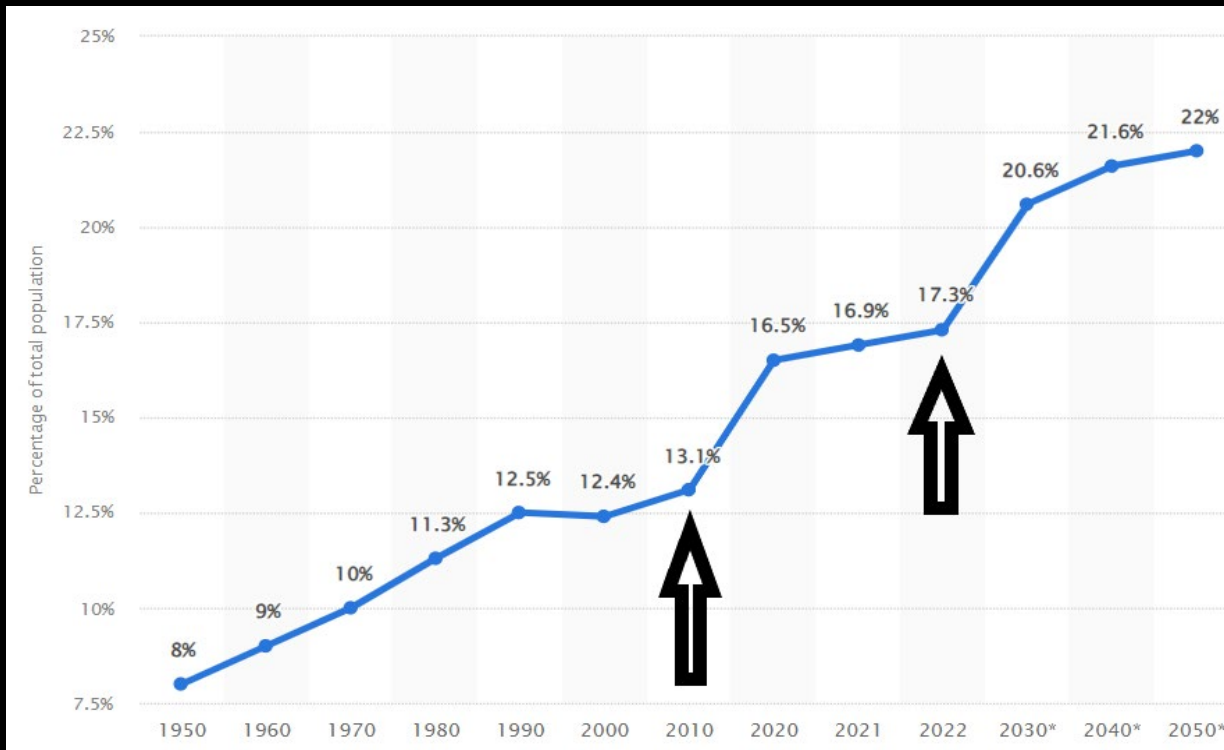
# Prevalence & Demographics and EM Implications

**Increased Prevalence** → more victims + increased strain on resources

**Caregiver stress** → increased burden on informal caregivers + shortage of formal care

**Societal and economic impact** → economic challenges and increased social isolation

**Healthcare system strain** → increased demand for specialized care



Share of old age population (65 years and older) in the total U.S. population from 1950 to 2050 (Statistica 2024)

# The Need for Accurate Prevalence Estimates

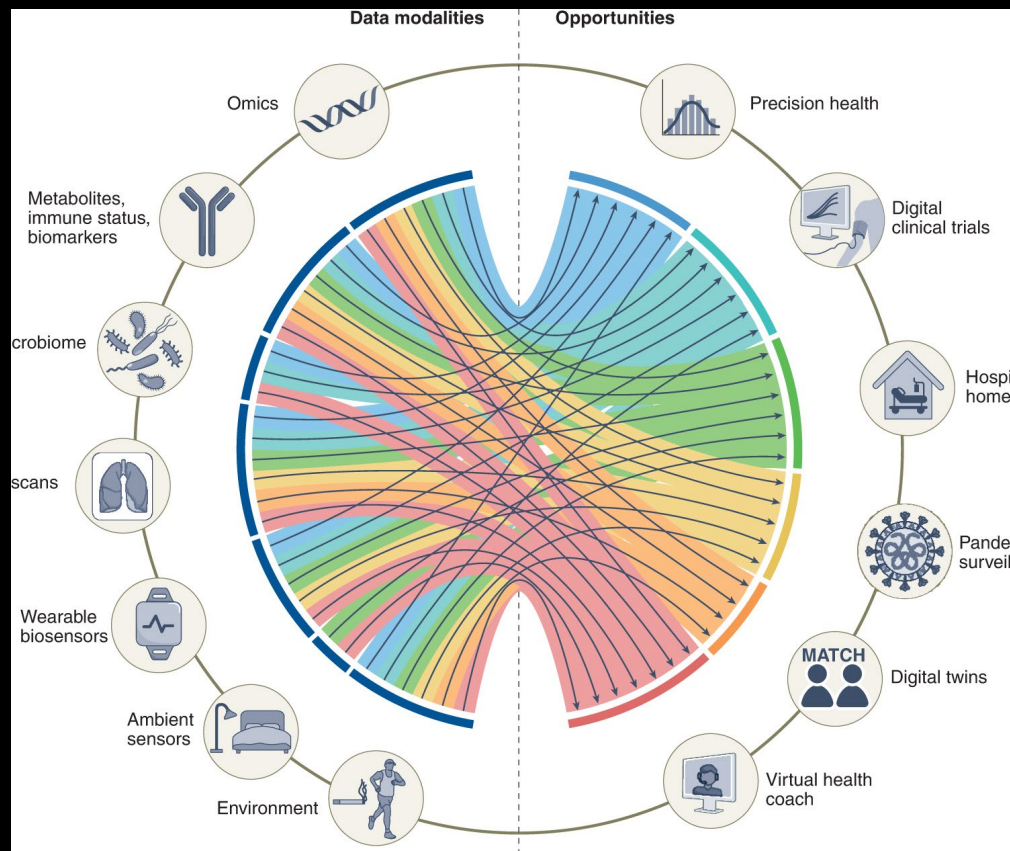
- To quantify the scale and scope of EM
- To identify trends, and prioritize areas requiring immediate attention
- To evaluate effectiveness of interventions
- To measure effects of environmental, policy, or social changes in a natural experiment study design

# Untapped opportunities for natural experiments

- Statutory differences in criminalization
- Health care services
- Different policy environments
- Changes in healthcare financing and payment models
- Changes in universal preventive coverage
- Changes in built environment and neighborhood transportation

# Artificial Intelligence + Machine Learning

The future is now



- **Data curation and analytics**
- **Multimodal AI models**
- **Detection and Clinical decision making**

# Fertile Ground

## NIH-supported Research Opportunities

**bssr**  
VIOLENCE  
RESEARCH  
INITIATIVES

**NIH** National Institutes of Health  
Office of Behavioral and Social Sciences Research



NIH Activities Related to "Insufficient Evidence" Statements of the United States Preventive Services Task Force

Results from the 2022 Annual Survey of Institutes, Centers and Offices

Prepared by:  
National Institutes of Health  
Office of Disease Prevention  
December 30, 2022

**NIH**  
ODP



ISSN: 2325-8292 Volume 10 Supplement 1 2023

# LBGT HEALTH

Violence and Related Health Outcomes in Sexual & Gender Minority Communities

Mary Ann Liebert, Inc. & publishers  
www.liebertpub.com/lgbt

**NIH** National Institutes of Health

The number of older people with HIV is increasing.

# Join Us in Celebrating NIA's 50 Years of Progress!

- Learn about **current research and future projects** via the Inside NIA blog
- Explore and **share training and career development** opportunities to advance aging research careers
- Read and share aging research career stories from NIA staff and grantees on NIA's **X and LinkedIn**
- Post about your aging research journey on social media (hashtag **#NIAWhereResearchComesOfAge**)



Learn more at [www.nia.nih.gov/50years](http://www.nia.nih.gov/50years).

# Thank you!

**Melissa S. Gerald, Ph.D.**

**[melissa.gerald@nih.gov](mailto:melissa.gerald@nih.gov)**

Division of Behavioral and Social Research

National Institute on Aging





1

## Pre-Planning

(Click to expand)

2

## Gathering Internal Input and Development of Strategic Plan Framework

(Click to expand)

3

## Gathering Input from External Stakeholders

(Click to expand)

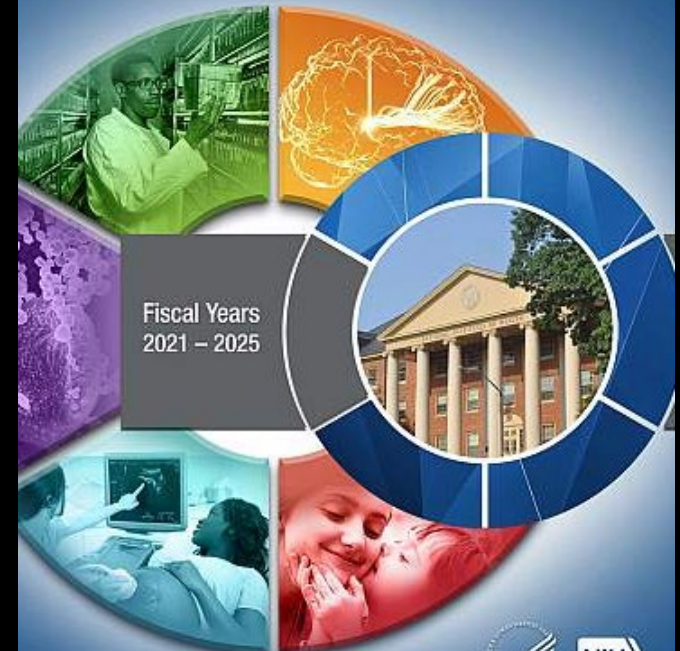
4

## Drafting and Publishing the Strategic Plan

(Click to expand)

# NIH Strategic Planning Process

## NIH-WIDE STRATEGIC PLAN



# NIH's Strategy Objectives & Crosscutting Themes

